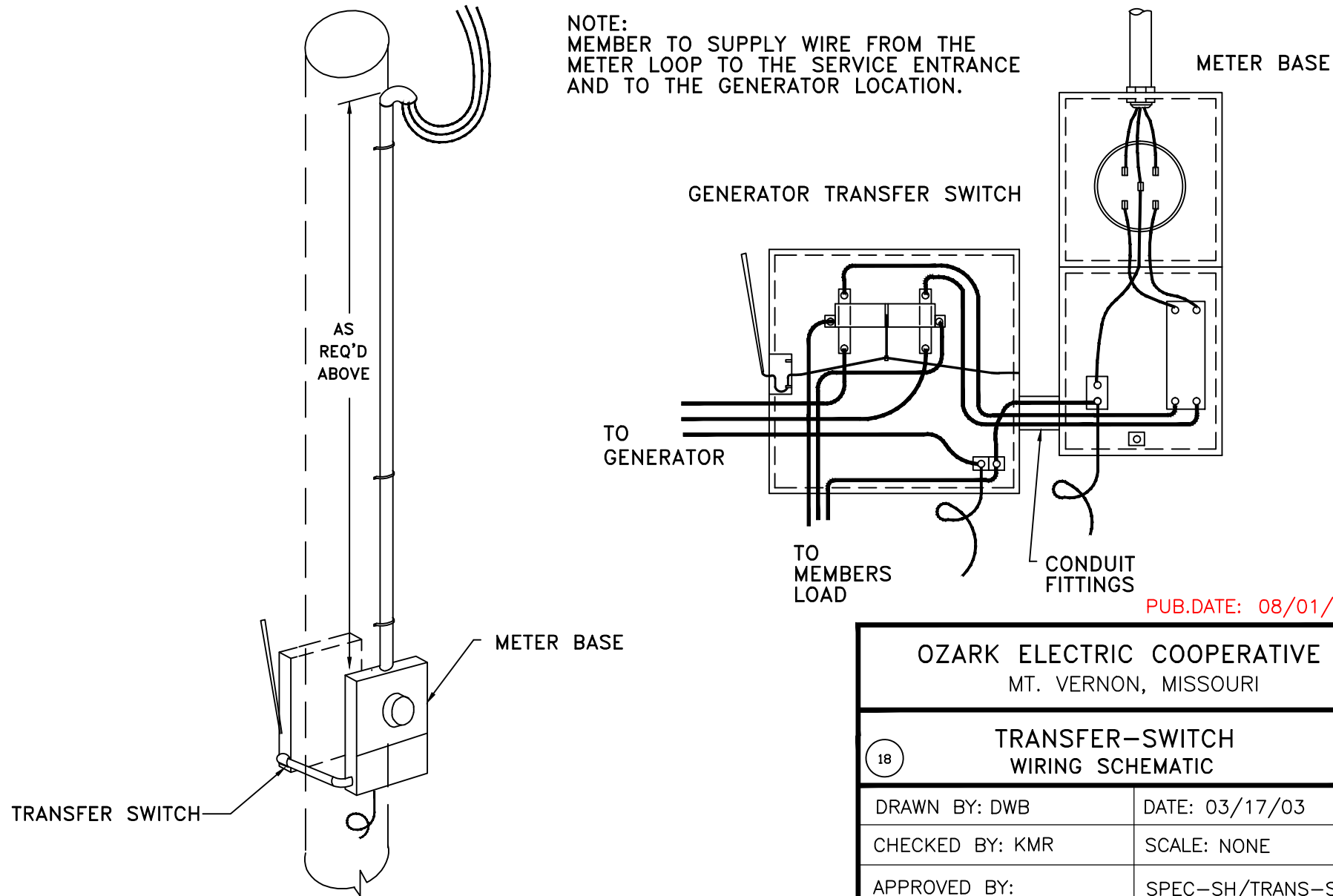


METER LOOP	COPPER WIRE OR ALUMINUM WIRE		RIGID CONDUIT GALVANIZED OR ALUMINUM		METER SOCKET & MAIN DISCONNECT	WEATHER HEAD	CONDUIT CLAMP	GROUND WIRE			
100 AMP METER LOOP	100'	#4 INSULATED (RH, RHH, RHW, THW, XHHW, THHW) STRANDED COPPER CONDUCTOR	100'	#2 INSULATED (RH, RHH, RHW, THW, XHHW, THHW) STRANDED ALUMINUM CONDUCTOR	15'	1-1/2" FOR ALUMINUM OR COPPER WIRE.	100 AMP	1 unit	3 ea. CONDUIT SUPPORT STRAPS	3'	#6 COPPER GROUND WIRE
200 AMP METER LOOP	100'	#2/0 INSULATED (RH, RHH, RHW, THW, XHHW, THHW) STRANDED COPPER CONDUCTOR	100'	#4/0 INSULATED (RH, RHH, RHW, THW, XHHW, THHW) STRANDED ALUMINUM CONDUCTOR	15'	2-1/2" FOR ALUMINUM 2" FOR COPPER WIRE.	200 AMP	1 unit	3 ea. CONDUIT SUPPORT STRAPS	3'	#4 COPPER GROUND WIRE
MOUNTED ON 40' TRANSFORMER POLE	80'	SIZE AND TYPE AS ABOVE	80'	SIZE AND TYPE AS ABOVE	20'	DIAMETER AS ABOVE	SIZE AS ABOVE	1 unit	3 ea. CONDUIT SUPPORT STRAPS	3'	SIZE AS ABOVE

NOTE:  
MEMBER TO SUPPLY WIRE FROM THE METER LOOP TO THE SERVICE ENTRANCE AND TO THE GENERATOR LOCATION.



PUB. DATE: 08/01/12

OZARK ELECTRIC COOPERATIVE  
MT. VERNON, MISSOURI

---

(18) TRANSFER-SWITCH  
WIRING SCHEMATIC

DRAWN BY: DWB	DATE: 03/17/03
CHECKED BY: KMR	SCALE: NONE
APPROVED BY:	SPEC-SH/TRANS-SW