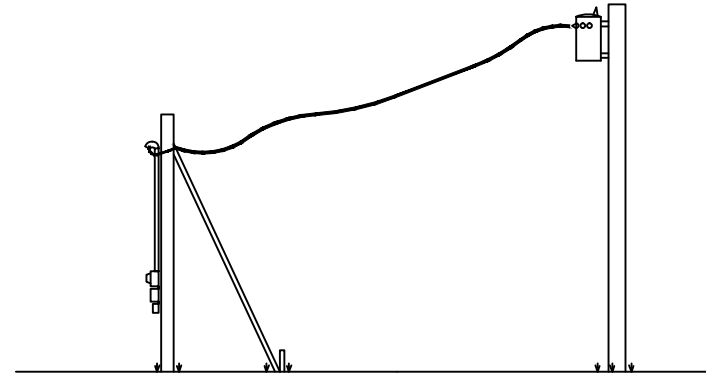
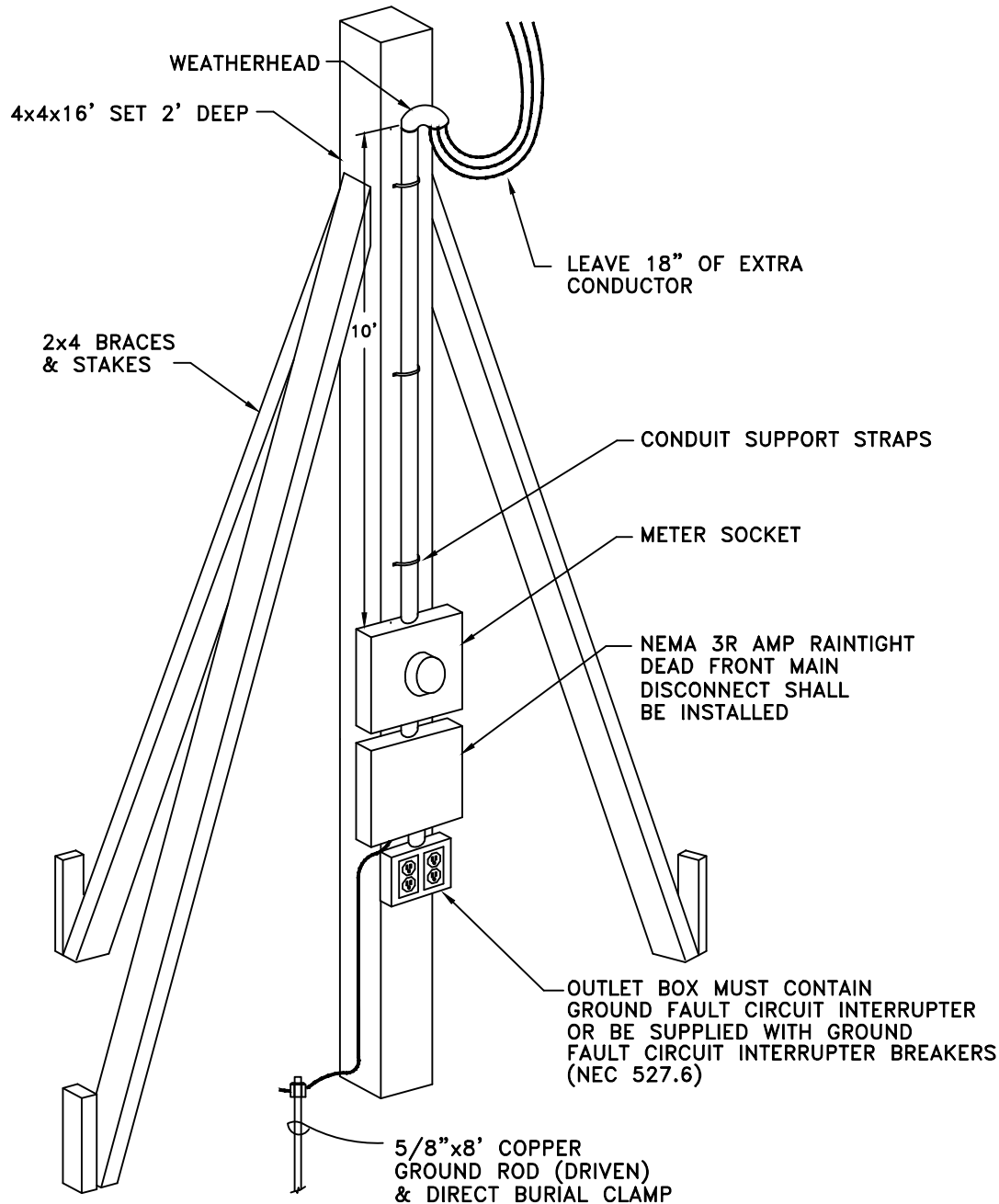


| METER LOOP        | COPPER WIRE |  | CONDUIT |            | METER SOCKET & MAIN DISCONNECT | WEATHER HEAD | CONDUIT CLAMP                | GROUND WIRE              |
|-------------------|-------------|--|---------|------------|--------------------------------|--------------|------------------------------|--------------------------|
| 60 AMP METER LOOP | 50'         | #6 INSULATED (RH, RHH, RHW, THW, XHHW, THHW) STRANDED COPPER CONDUCTOR | 10'     | 1" CONDUIT | 100 AMP                        | 1 unit       | 3 ea. CONDUIT SUPPORT STRAPS | 5' #6 COPPER GROUND WIRE |



**NOTES:**

- 1) MEMBER MUST HAVE METER LOOP ASSEMBLED & STANDING.
- 2) LOOP MUST BE WITHIN 90' OF EXISTING POLE.
- 3) METER LOOP MUST BE WITHIN 5' OF PAD-MOUNT TRANSFORMER.
- 4) METER LOOP MUST BE ON THE SAME SIDE OF ROAD AS POLE.
- 5) ONE BRACE MUST "POINT" FROM EXISTING POLE TO BRACE AGAINST PULL OF WIRE.
- 6) PERMANENT LOOP IS REQUIRED IF SERVICE IS TO BE CONNECTED FOR MORE THAN 6 MONTHS.

PUB.DATE: 08/01/12

OZARK ELECTRIC COOPERATIVE  
MT. VERNON, MISSOURI

4  
**TEMPORARY  
3 WIRE METER LOOP**

|                 |                   |
|-----------------|-------------------|
| DRAWN BY: DWB   | DATE: 03/17/03    |
| CHECKED BY: KMR | SCALE: NONE       |
| APPROVED BY:    | SPEC-SH/TEMP-LOOP |