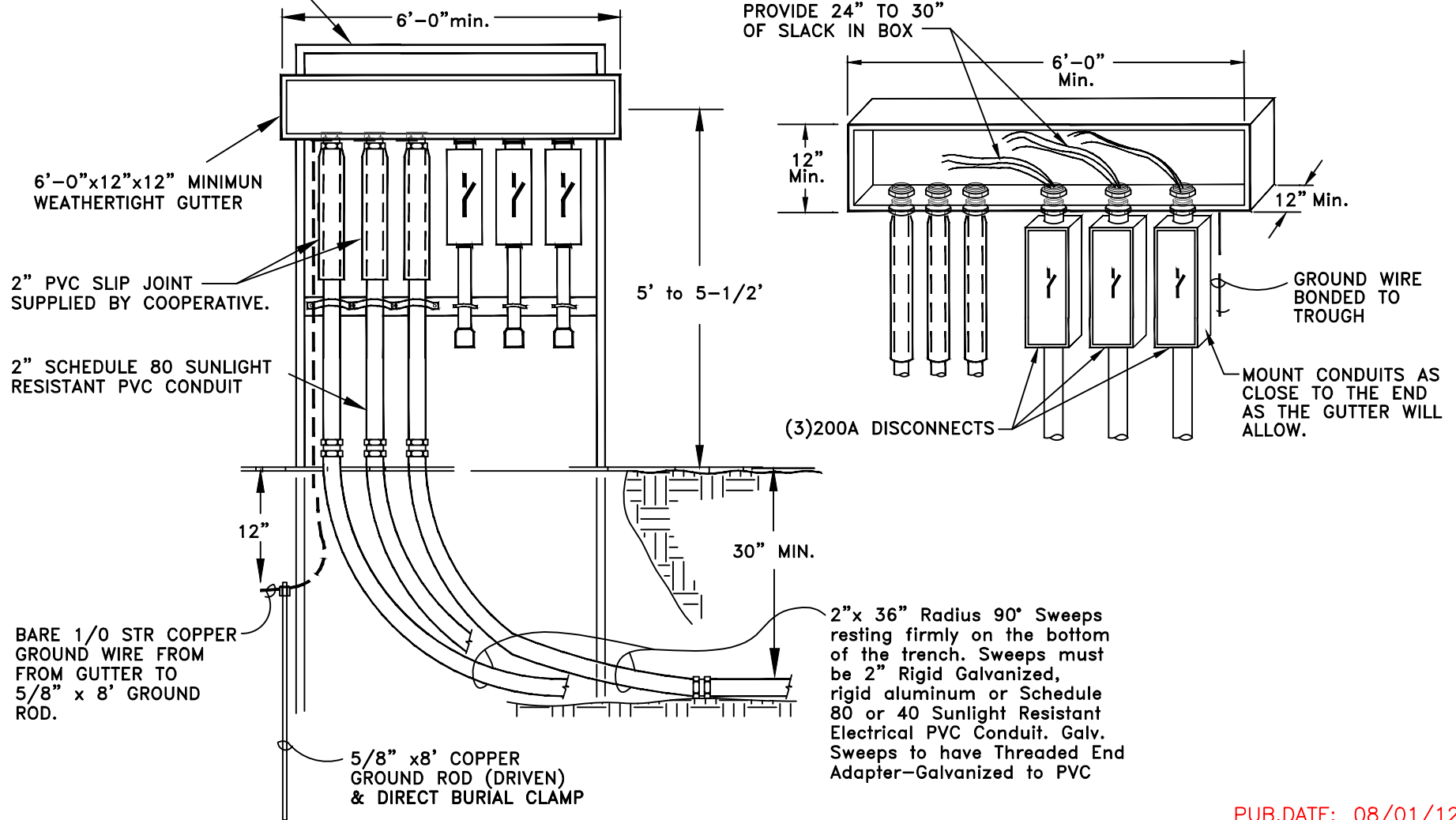


STAND CAN BE BUILT WITH 2" RIGID CONDUIT GALVANIZED OR EQUIVALENT MUST BE WEATHER RESISTANT. WOOD OR BARE STEEL IS NOT ACCEPTABLE.

NOTE:  
THIS INSTALLATION TO BE USED FOR CT METER INSTALLATION FOR MORE THAN 200 AMP SERVICE TO BE INSTALLED BY TRANSFORMER AT SIDE OR REAR OF TRANSFORMER.



PUB.DATE: 08/01/12

REV: AUG 18, 2010  
SLIP JOINT

**SPECIFICATIONS  
FOR  
600AMP TRIPLE-DISCONNECT  
CT METERED / FREE STANDING**

15 **OZARK ELECTRIC COOPERATIVE  
MT. VERNON, MISSOURI**

DRAWN BY: DWB

DATE: 05/15/07

DESIGNED BY: DJ

SCALE: NONE

APPROVED BY:

SPEC-SH/600-TD-CT