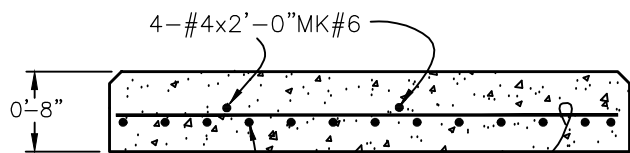


**PLAN**



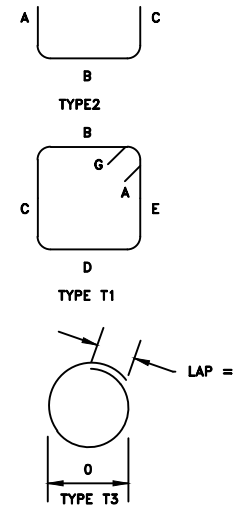
**SECTION**

1 @ 1.68 CU YD

Complete Meter Pedestal will be furnished by the CO-OP. Please give 48 hours notice of pouring pad so pedestal may be placed in completed form prior to pouring concrete.

CO-OP furnished 1" pipe for conduit from meter pedestal to window of pad (secondary side). To be in poured pad.

CO-OP furnished 2" pipes 5'-0" long for mounting meter base placed 2'-0" apart O.C. and 1'-1/2" from edge of concrete O.C.



TYPICAL BEND TYPES PER TO CRSI MANUAL STANDARD PRACTICE.

**NOTES:**

1. FORMS FOR PAD ARE TO BE BUILT IN ACCORDANCE TO THESE SPECIFICATIONS.
2. PLEASE CONTACT OZARK ELECTRIC AT EITHER (417) 466-2144 OR (417) 725-5160. ASK FOR MAINTENANCE DEPARTMENT. CALL 48 HOURS IN ADVANCE OF CONCRETE POUR SO PAD MAY BE INSPECTED.
3. CONCRETE TESTING, 4000 POUNDS PER SQUARE INCH; 4% TO 6% ENTRAINED AIR, 3/4" MAXIMUM SIZE AGGREGATE.
4. REINFORCING STEEL, ASTM-A615 GRADE 60, PLACE APPROX. 6" O.C. EACH WAY AND SECURELY TIED TOGETHER.
5. MINIMUM CONCRETE COVER OVER REINFORCING STEEL, 2 INCHES UNLESS NOTED.
6. WOOD FLOAT FINISH, LEAVING NO DEPRESSIONS.
7. 12" EXTENSION FOR METERING ON SECONDARY SIDE OF PAD.

QTY.	SIZE	LENGTH	MARK	TYPE	A	B	C	D	E	F	G	H	I	J	K	O	R	REMARKS
13	4	8-4	1															
4	4	2-8	2															
7	4	8-2	3															
8	4	5-2	4															
12	4	0-8	5															
4	4	2-0	6															

ALL DIMENSIONS ARE OUT TO OUT.  
 ALL STEEL ASTM A615 GRADE 60.  
 ALL DIMENSIONS LESS THAN 12 IN. ARE GIVEN IN INCHES.  
 BUNDLE ALL LIKE BARS AND LABEL WITH MARK AND FOOTING.

PUB. DATE: 08/01/12

**OZARK ELECTRIC COOPERATIVE**  
 MT. VERNON, MISSOURI

---

**THREE PHASE TRANSFORMER**  
**CONCRETE PADS** Rev.05/13/09

22

DRAWN BY: DB	DATE: 03/17/03
CHECKED BY: KMR	SCALE: NONE
APPROVED BY:	SPEC-SH/UM1-6C(2)