

WARNING:

IF WE CANNOT COMPLETE INSTALLATION OF WIRE DUE TO INABILITY TO PULL WIRE TO MAKE FINAL CONNECTIONS, JOB WILL BE ABORTED UNTIL CHANGES ARE MADE BY MEMBER.

NOTE:

Clearance from Conduit Sweep to foundation footings must be maintained so Sweep rests firmly on the bottom of the trench. The Conduit Sweep shall not be altered in any way to accommodate this clearance. Sweep must maintain an unaltered 36" radius.

NOTE:

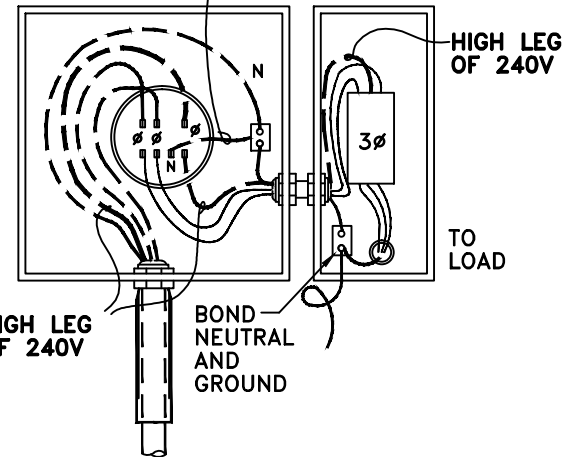
DO NOT BRICK AROUND METER BASE OR OVER CONDUIT RISER. MUST BE SURFACE MOUNTED.

(1) 200 AMP BREAKER MOUNTED WITH METER BASE

NOTE: SERVICE PANEL CAN NOT BE LOCATED IN BATHROOMS OR IN VICINITY OF EASILY IGNITIBLE MATERIALS SUCH AS CLOTHES CLOSETS. (REF. NEC ART. 240-24)

NOTE: CONDUIT RISER WILL BE SECURELY ANCHORED BY NOT LESS THAN 2 STRAPS WITH THE LOWEST STRAP AT TOP OF SWEEP.

#10 COPPER WHITE INSULATION

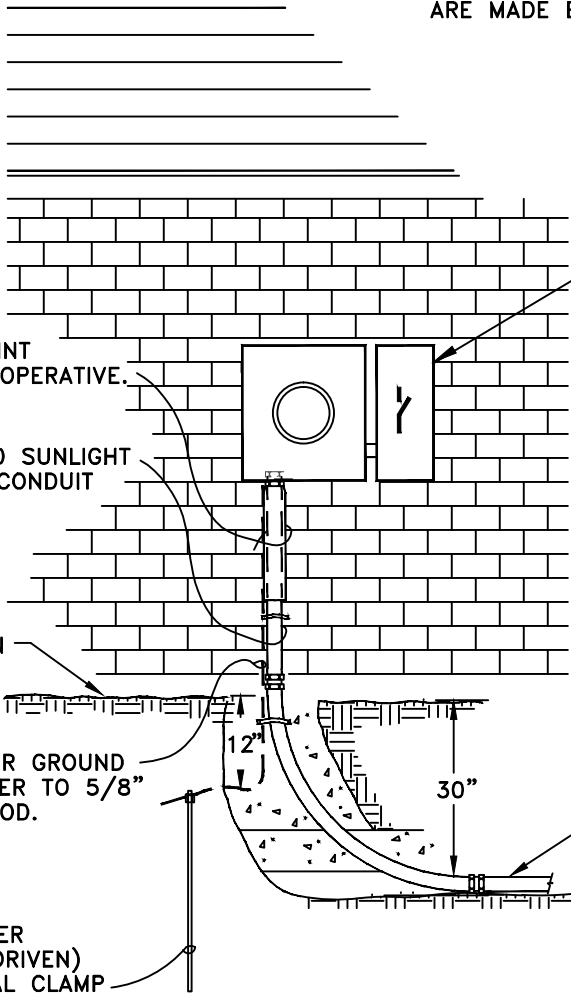


WIRING SCHEMATIC

NOTES:

1. HIGH LEG OF 240V CONNECTS TO CENTER LUG IN MEMBERS BREAKER REF: NEC.384-3(f)
2. PROVIDE AS MUCH SLACK AS POSSIBLE IN MEMBERS BREAKER.

PUB.DATE: 08/01/12



3" PVC SLIP JOINT SUPPLIED BY COOPERATIVE.

3" SCHEDULE 80 SUNLIGHT RESISTANT PVC CONDUIT

GROUND LINE AT INSTALLATION

BARE #4 COPPER GROUND WIRE FROM METER TO 5/8" X 8' GROUND ROD.

5/8" x8' COPPER GROUND ROD (DRIVEN) & DIRECT BURIAL CLAMP

3"x 36" Radius 90° Sweep resting firmly on the bottom of the trench. Sweep must be 3" Rigid Galvanized, rigid aluminum or Schedule 80 or 40 Sunlight Resistant Electrical PVC Conduit. Galv. Sweep to have Threaded End Adapter-Galvanized to PVC

SPECIFICATIONS FOR 3 PHASE UNDERGROUND SERVICE

7 TERMINAL
200 AMP
120/240 V DELTA
3Ø METER BASE

12 OZARK ELECTRIC COOPERATIVE
MT. VERNON, MISSOURI

DRAWN BY: DWB

DATE: 03/17/03

CHECKED BY: KMR

SCALE: NONE

APPROVED BY:

SPEC-SH\3PH-UGS